

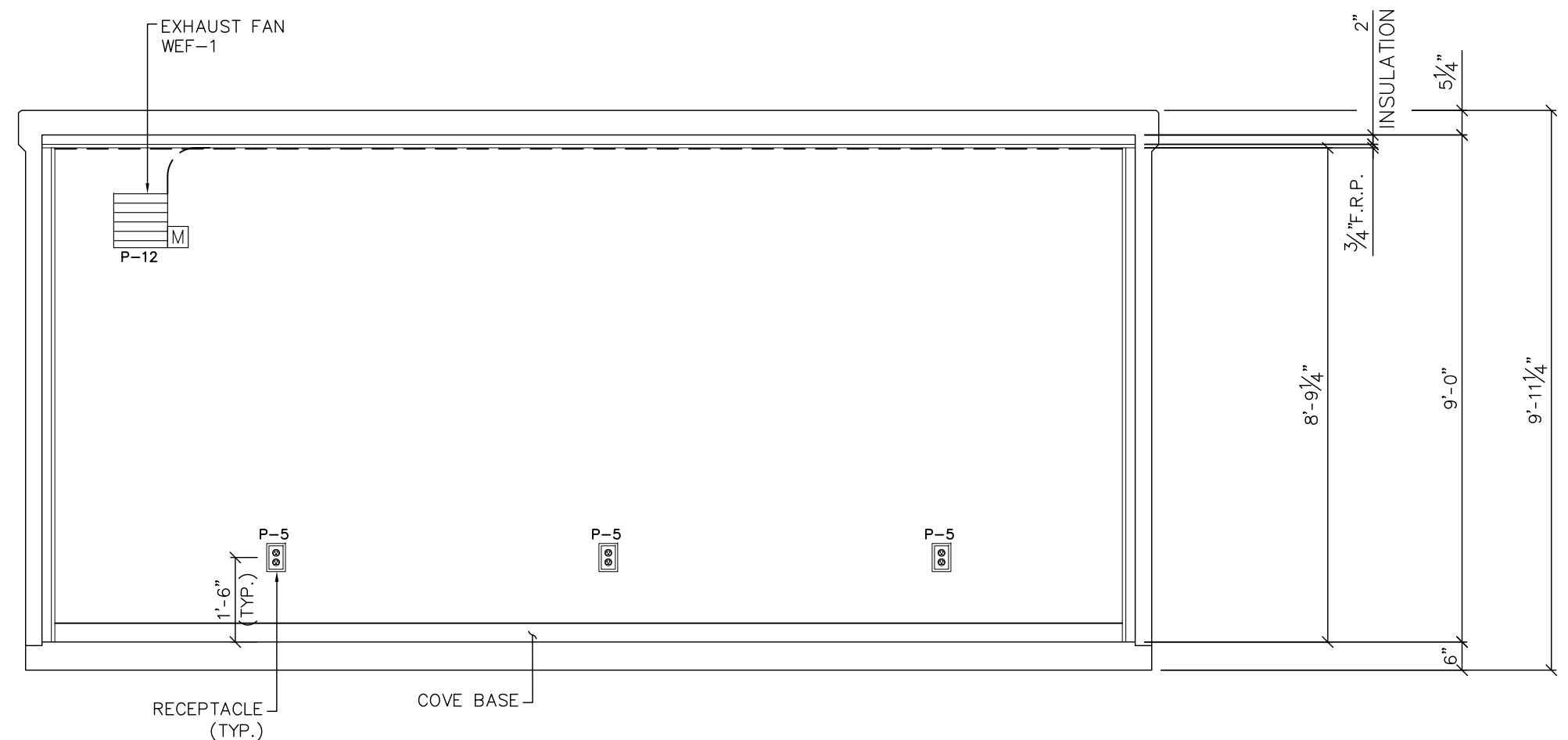
GENERAL NOTES:

1. CONCRETE COMPRESSIVE STRENGTH: **5,000 PSI @ 28 DAYS.**
2. STRUCTURAL SHALL BE WET CAST USING A SELF COMPACTING CONCRETE MIX.
3. REINFORCING STEEL DEFORMED BARS CONFORM TO LATEST ASTM SPECIFICATION A706, GRADE 60, 1 1/2" MINIMUM COVER, U.N.O.
4. THE SUPPORTING BASE FOR THE BUILDING AND ALL CONCRETE PADS OUTSIDE OF THE BUILDING ARE THE RESPONSIBILITY OF THE SITE CONTRACTOR.
5. CONCRETE STRUCTURE TO HAVE 3" SOLID WALLS WITH 1/2" BRICK FORMLINER, 6" THICK FLOOR AND 6" THICK ROOF.
6. HALO GROUNDING EXITS SHALL BE 1/2" PVC THRU AT 45° IN THE FOUR CORNERS OF THE BUILDING. WIRE SIZES TO BE #2 STRANDED CU 3' LONG TO EXTERIOR GROUNDING RING.
7. ALL ELECTRICAL CONDUITS ARE TO BE SURFACE MOUNT.
8. CORROSION RESISTANT ADDITIVE ADDED TO THE CONCRETE.

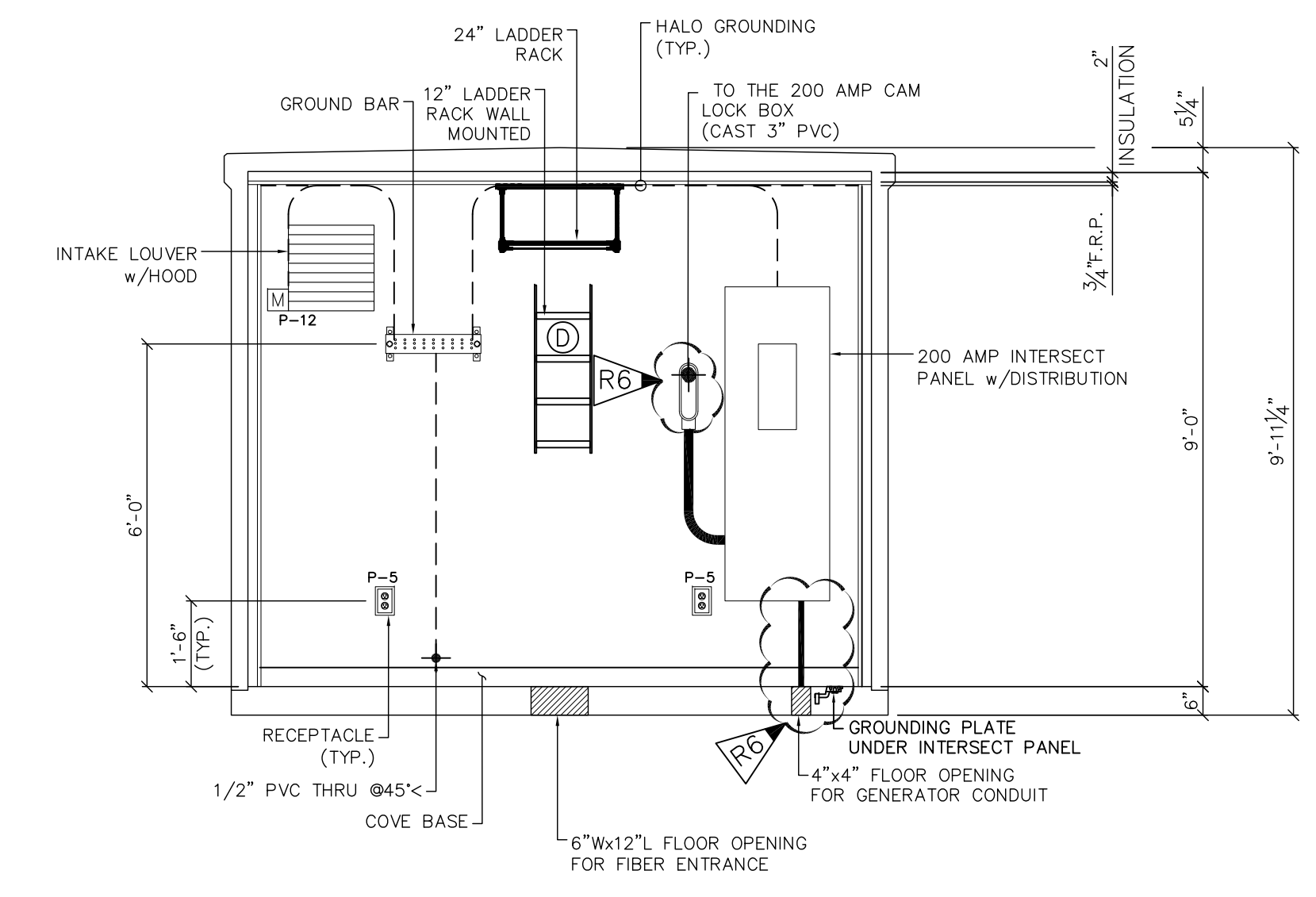
WEIGHT CHART

PRODUCT	APPROX. WEIGHT
PRECAST CONCRETE BUILDING w/EQUIPMENT	55,000 LBS.

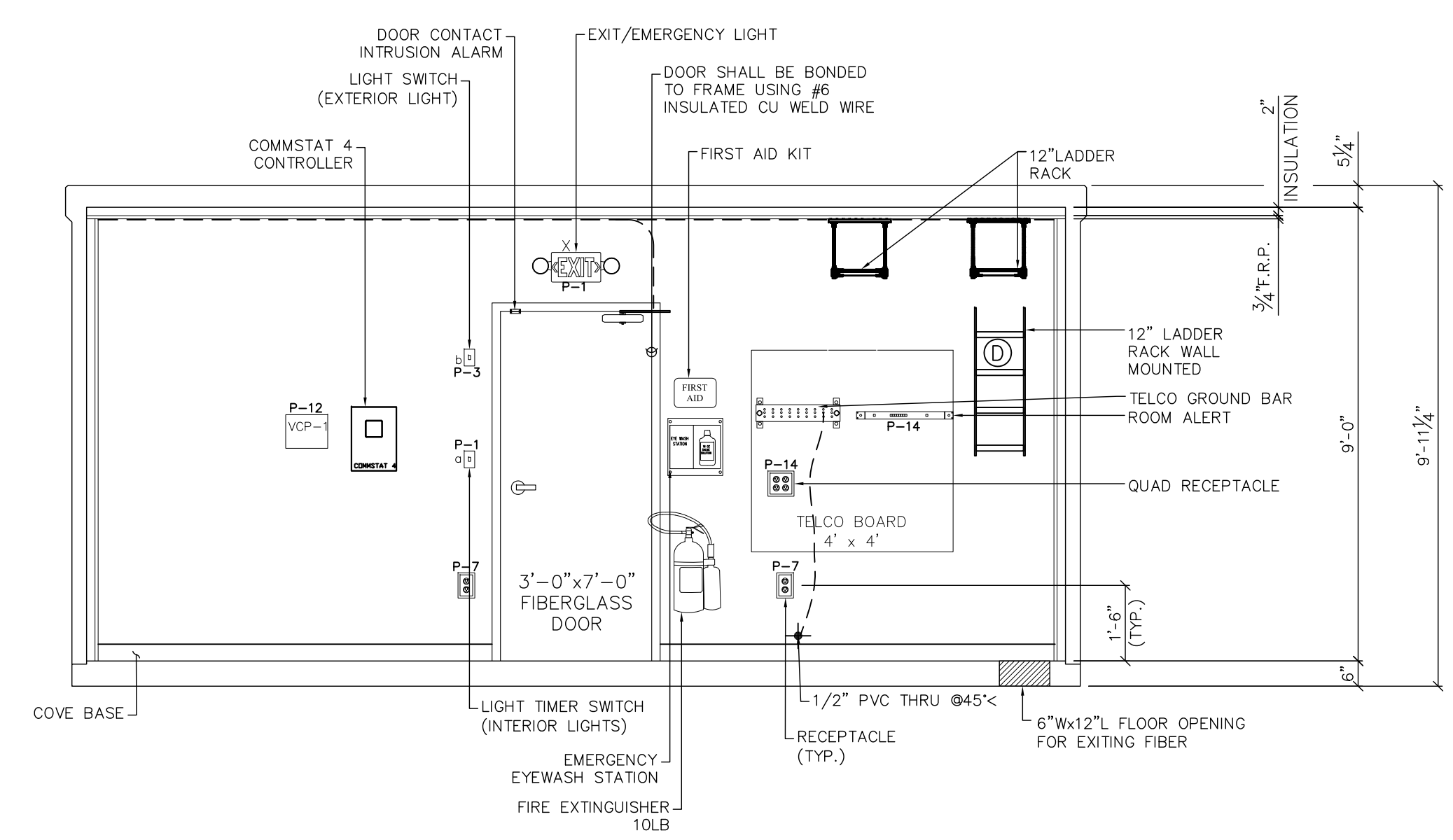
FINISH SCHEDULE		
AREA	COATING TYPE	COLOR
ROOF	EPDM RUBBER ROOF	BLACK
BUILDING EXTERIOR WALLS	FORMED BRICK	WINTER GRAY 441M
INTERIOR WALLS & CEILING	(1) LAYER OF 2" RIGID INSULATION WITH (1) LAYER OF 3/4" PLYWOOD w/FRP	WHITE
FLOOR	FLOOR TILE VCT	CLASSIC WHITE
LOUVERS	MILL FINISH	MILL FINISH
DOOR & FRAME	(2) COATS OF SHERWIN WILLIAMS SHER-CRYL HPA	SLATE GRAY SW4026
BUILDING SEALANT/CAULK	TREMCO DYMONIC	LIMESTONE



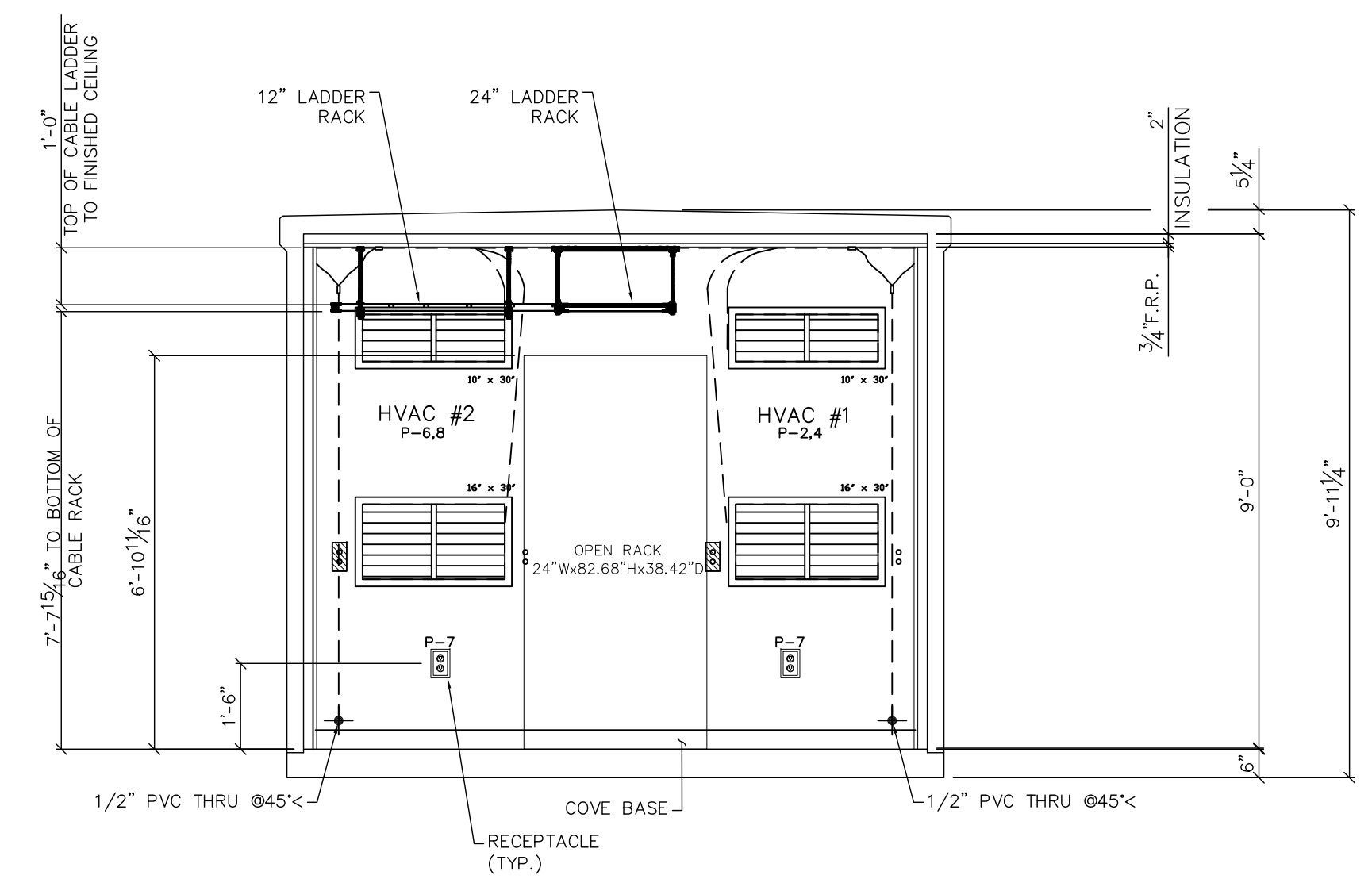
A INTERIOR ELEVATION EAST



B INTERIOR ELEVATION SOUTH



C INTERIOR ELEVATION WEST



D INTERIOR ELEVATION NORTH

DRAWING LOG		
NUMBER	DATE	DESCRIPTION
6	10/23/18	REVISED PER JL
5	10/19/18	ADDED CIRCUITS PER JL
4	-	-
3	10/1/18	REVISED PER PN
2	9/13/18	REVISED PER PN
1	8/29/18	REVISED PER PN

UNITED CONCRETE PRODUCTS INC.
 173 Church Street Yalesville, CT 06492
 (800) 234-3119 Fax: (203) 265-4941

CUSTOMER: SERTEX, LLC.
 JOB NAME: SAMPLE

DWG TITLE: PRECAST CONCRETE BUILDING - INTERIOR ELEVATIONS
 CAD DWG: JPR DATE: 08/30/18
 CAD CHK'D: DATE: GW CHK'D: DATE:
 JOB NO: 9531 SCALE: 3/8" = 1'-0" DRAWING NO: A-2

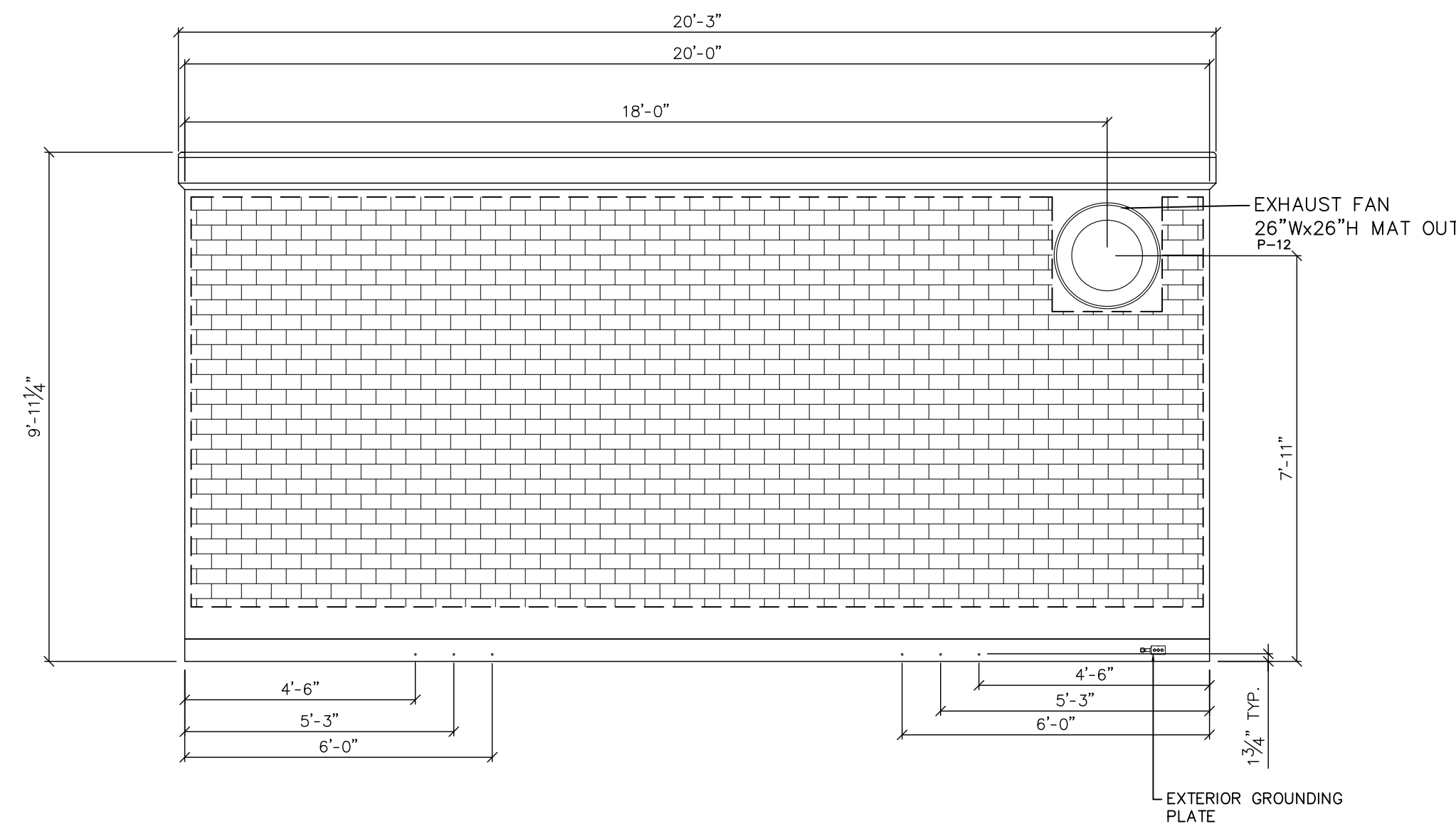
GENERAL NOTES:

1. CONCRETE COMPRESSIVE STRENGTH: **5,000 PSI @ 28 DAYS.**
2. STRUCTURAL SHALL BE WET CAST USING A SELF COMPACTING CONCRETE MIX.
3. REINFORCING STEEL DEFORMED BARS CONFORM TO LATEST ASTM SPECIFICATION A706, GRADE 60, 1 1/2" MINIMUM COVER, U.N.O.
4. THE SUPPORTING BASE FOR THE BUILDING AND ALL CONCRETE PADS OUTSIDE OF THE BUILDING ARE THE RESPONSIBILITY OF THE SITE CONTRACTOR.
5. CONCRETE STRUCTURE TO HAVE 3" SOLID WALLS WITH 1/2" BRICK FORMLINER, 6" THICK FLOOR AND 6" THICK ROOF.
6. HALO GROUNDING EXITS SHALL BE 1/2" PVC THRU AT 45° IN THE FOUR CORNERS OF THE BUILDING. WIRE SIZES TO BE #2 STRANDED CU 3' LONG TO EXTERIOR GROUNDING RING.
7. ALL ELECTRICAL CONDUITS ARE TO BE SURFACE MOUNT.
8. CORROSION RESISTANT ADDITIVE ADDED TO THE CONCRETE.

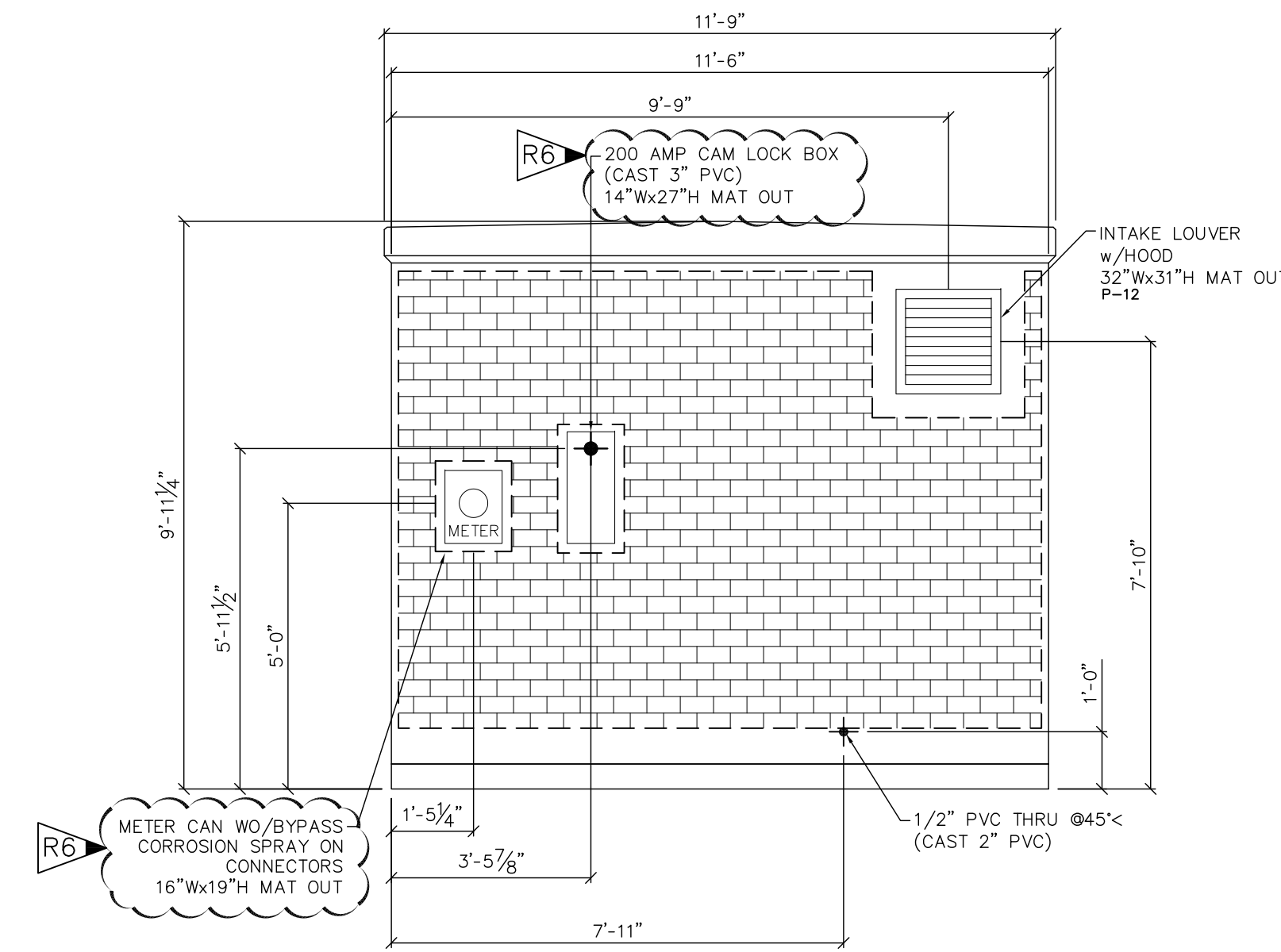
WEIGHT CHART

PRODUCT	APPROX. WEIGHT
PRECAST CONCRETE BUILDING w/EQUIPMENT	55,000 LBS.

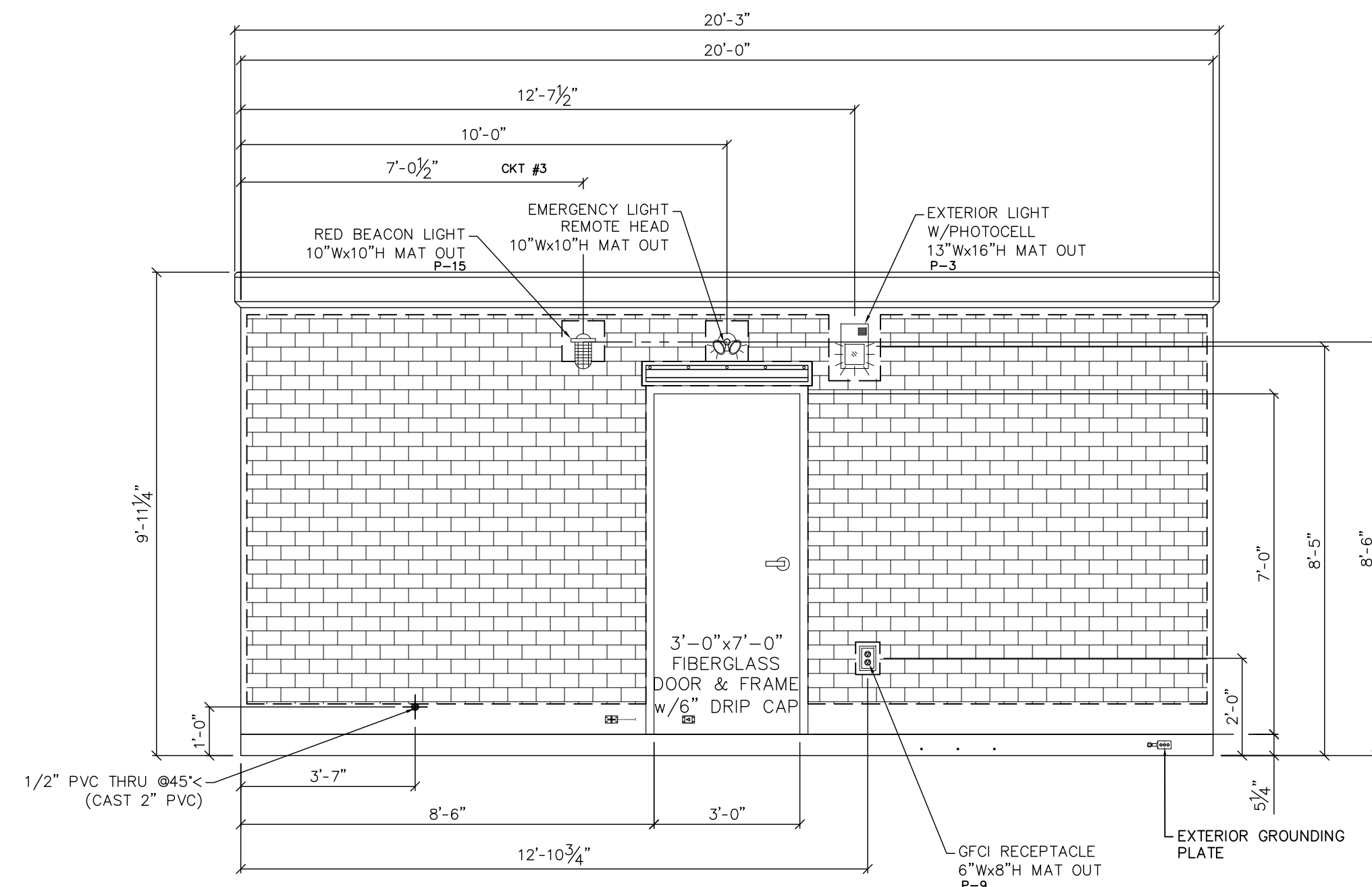
FINISH SCHEDULE		
AREA	COATING TYPE	COLOR
ROOF	EPDM RUBBER ROOF	BLACK
BUILDING EXTERIOR WALLS	FORMED BRICK	WINTER GRAY 441M
INTERIOR WALLS & CEILING	(1) LAYER OF 2" RIGID INSULATION WITH (1) LAYER OF 3/4" PLYWOOD w/FRP	WHITE
FLOOR	FLOOR TILE VCT	CLASSIC WHITE
LOUVERS	MILL FINISH	MILL FINISH
DOOR & FRAME	(2) COATS OF SHERWIN WILLIAMS SHER-CRYL HPA	SLATE GRAY SW4026
BUILDING SEALANT/CAULK	TREMCO DYMONIC	LIMESTONE



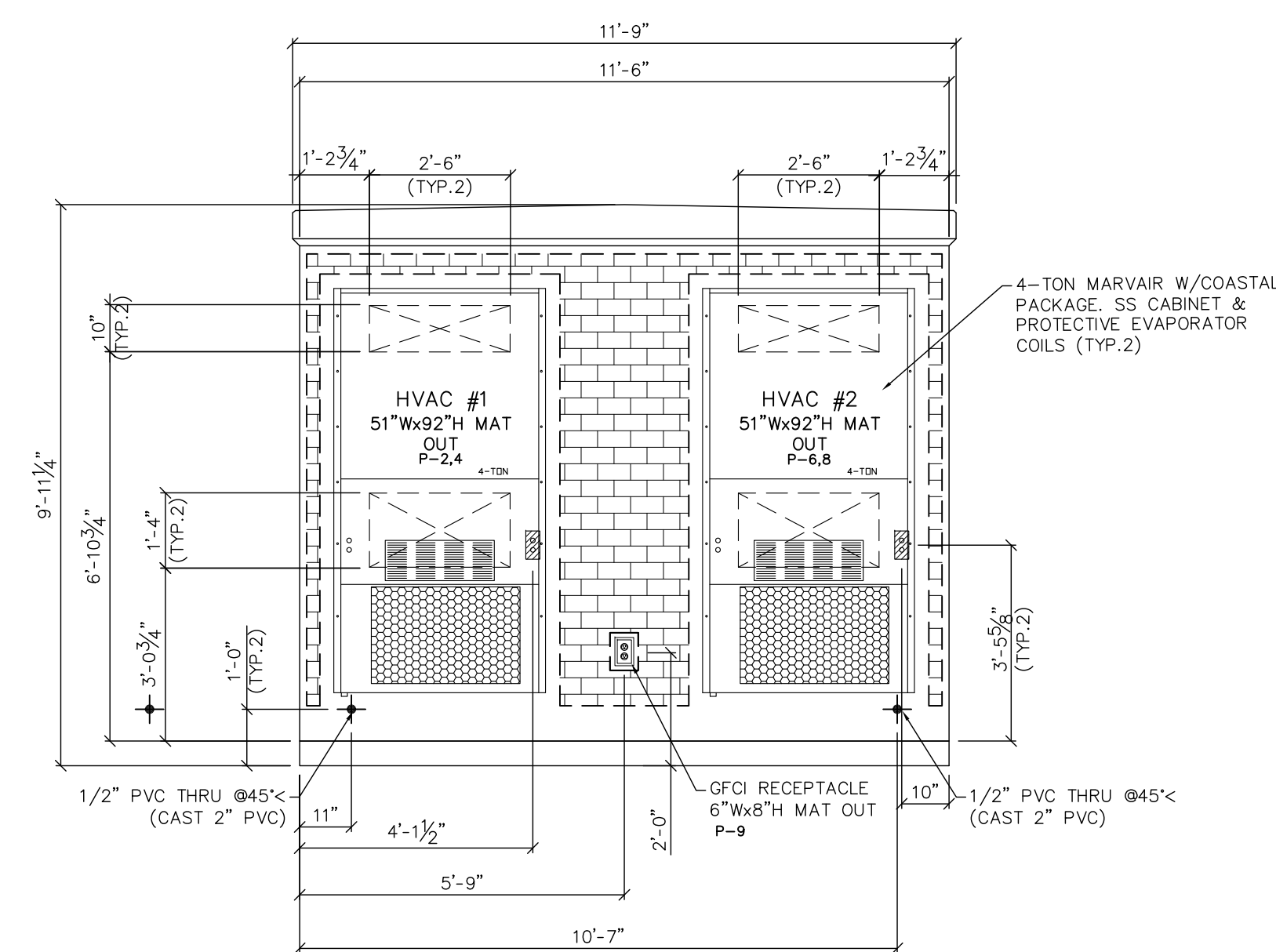
E EXTERIOR ELEVATION EAST



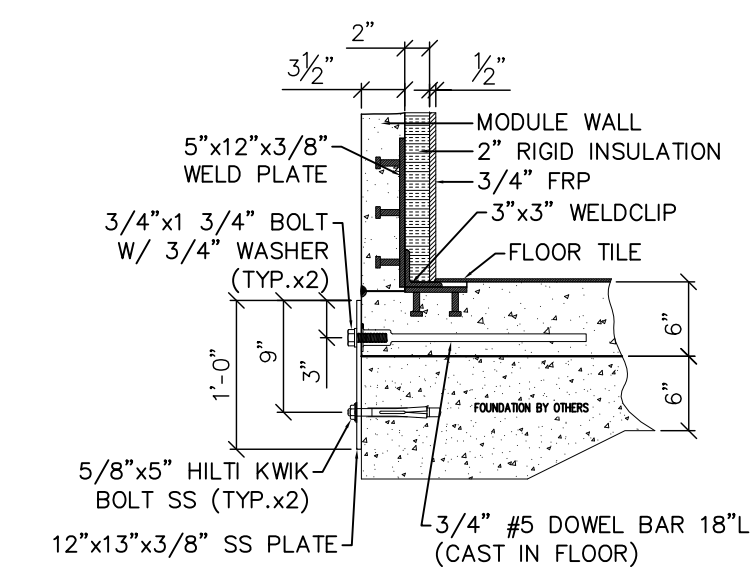
F EXTERIOR ELEVATION SOUTH



G EXTERIOR ELEVATION WEST



H EXTERIOR ELEVATION NORTH

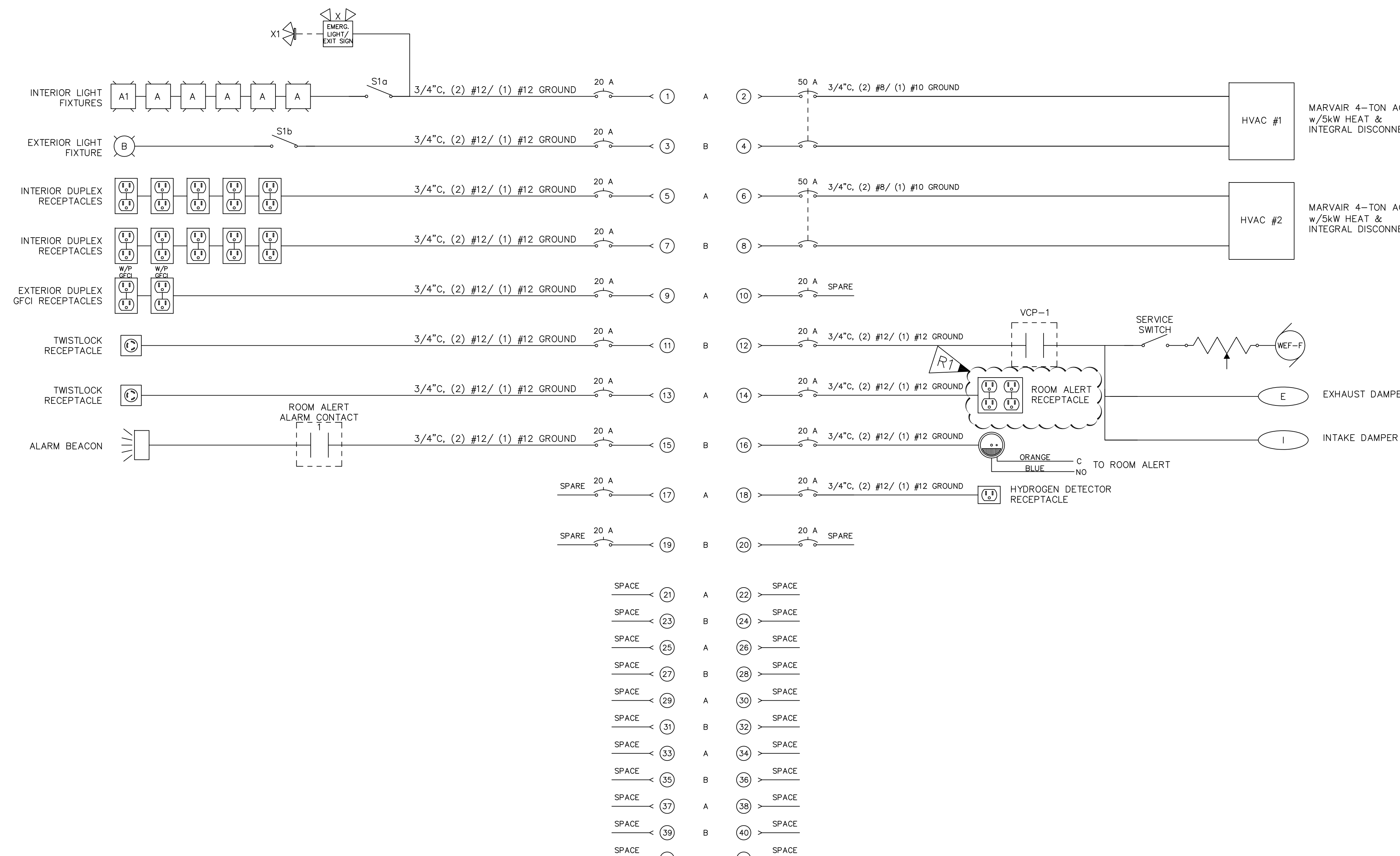


J ANCHORING DETAIL N.T.S.

DRAWING LOG		
NUMBER	DATE	DESCRIPTION
6	10/23/18	REVISED PER JL
5	10/19/18	ADDED CIRCUITS PER JL
4	10/2/18	REVISED PER PN
3	10/1/18	REVISED PER PN
2	9/13/18	REVISED PER PN
1	8/29/18	REVISED PER PN

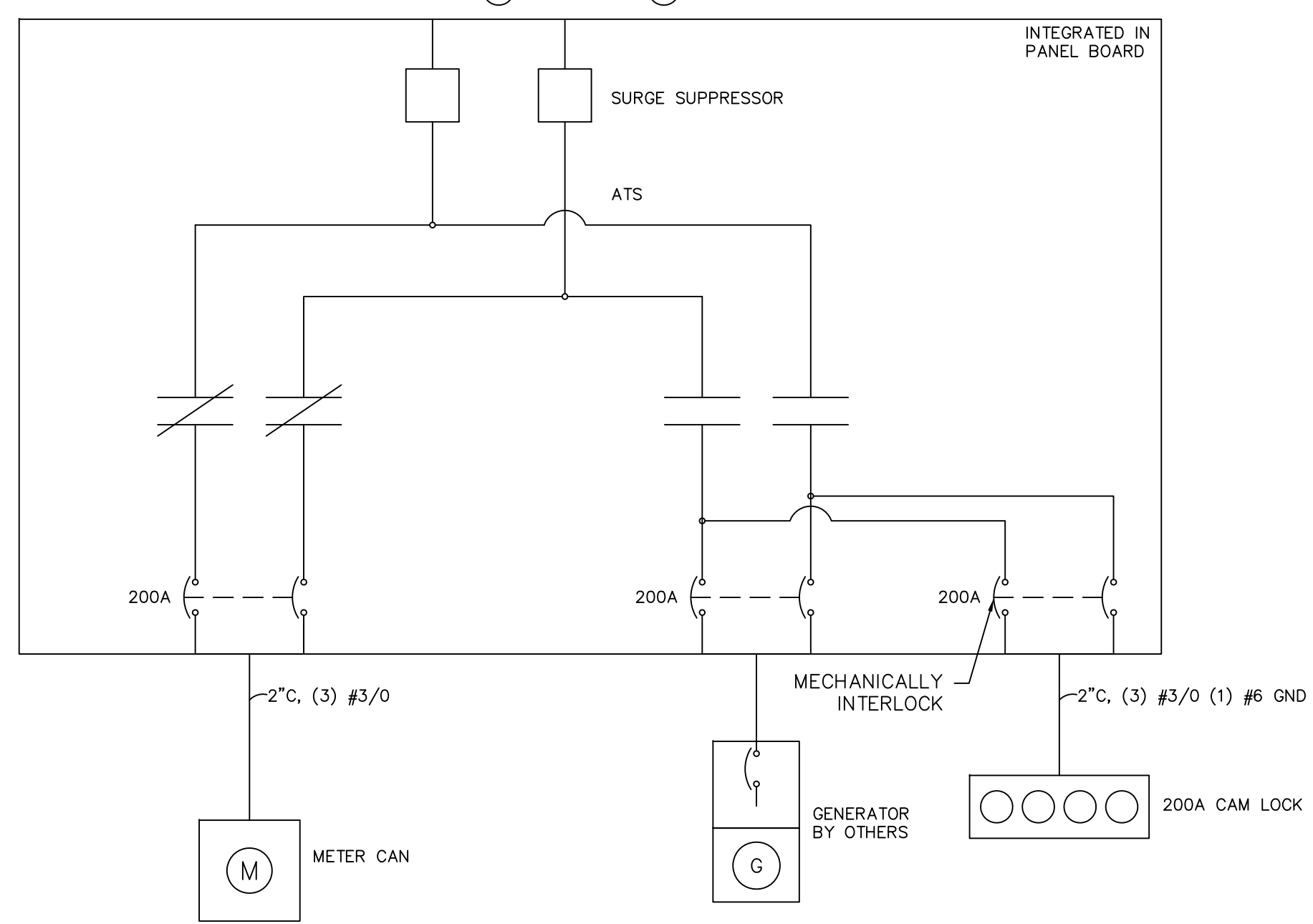
UNITED
CONCRETE PRODUCTS
UNITED CONCRETE PRODUCTS INC.
173 Church Street Yalesville, CT 06492
(800) 234-3119 Fax: (203) 265-4941

CUSTOMER:	SERTEX, LLC
JOB NAME:	SAMPLE
JOB LOCATION:	
DWG TITLE:	PRECAST CONCRETE BUILDING - EXTERIOR ELEVATIONS
CAD DWN:	JPR
DATE:	08/30/18
SCALE:	3/8" = 1'-0"
DRAWING NO.:	A-3



ELECTRICAL LOADS				
CIRCUIT #	AMP RATING	DESCRIPTION	"A" LOAD (WATTS)	"B" LOAD (WATTS)
1	20	INTERIOR LIGHTING	229	-
2	50	HVAC #1	2875	-
4			-	2875
3	20	EXTERIOR LIGHT FIXTURES	-	23
5	20	INTERIOR DUPLEX RECEPTACLES	900	-
6	50	HVAC #2	2875	-
8			-	2875
7	20	INTERIOR DUPLEX RECEPTACLES	-	900
9	20	EXTERIOR GFCI DUPLEX RECEPTACLES	360	-
10	20	SPARE	**	-
11	20	TWISTLOCK RECEPTACLE	-	1500
12	20	EXHAUST FAN WEF-1	-	129
13	20	TWISTLOCK RECEPTACLE	1500	-
14	20	ROOM ALERT	360	-
15	20	ALARM BEACON	-	15
16	20	SMOKE DETECTOR	-	50
17	20	SPARE	**	-
18	20	HYDROGEN DETECTOR	10	-
19	20	SPARE	-	**
20	20	SPARE	-	**
21	-	SPACE	**	-
22	-	SPACE	**	-
23	-	SPACE	-	**
24	-	SPACE	-	**
25	-	SPACE	**	-
26	-	SPACE	**	-
27	-	SPACE	-	**
28	-	SPACE	-	**
29	-	SPACE	**	-
30	-	SPACE	**	-
31	-	SPACE	-	**
32	-	SPACE	-	**
33	-	SPACE	**	-
34	-	SPACE	**	-
35	-	SPACE	-	**
36	-	SPACE	-	**
37	-	SPACE	**	-
38	-	SPACE	**	-
39	-	SPACE	-	**
41	-	SPACE	-	**
40	-	SPACE	**	-
42	-	SPACE	**	-

	9099 WATTS	8367 WATTS
	75.8 AMPS	69.7 AMPS
TOTAL	17466 WATTS	



NOTES:
 1. ALL CONDUIT SHALL BE 3/4\"/>

LIGHTING SCHEDULE																
LIGHT #	DESCRIPTION	MFG.	MODEL	LAMP			ELECTRICAL		NOTES							
				TYPE	COLOR/TEMP	QT.	V	W	1	2	3	4	5	6		
A	4' LED WRAP	MAXLITE	LSUECO-4NU4050	LED	5000K	NA	120-277	40.4	X							5
A1	2' LED WRAP	MAXLITE	LSU2U-2050	LED	5000K	NA	120-277	22.6	X							1
B	LED WALLPACK	LITHONIA	OLWP-P140K-120-PE-BZ	LED	NA	NA	120	22.8	X		X					1
X	EXIT/EMERGENCY COMBO FIXTURE	LITHONIA	ECR LED HO M6	LED	RED	2	120-277	3.8	X	X						1
X1	DUAL REMOTE EMERGENCY HEAD	LITHONIA	ELA LED T WP M12	LED	NA	2	9.6	2	X	X						1

NOTE SCHEDULE:
 1. MOUNTING - COORDINATE IN THE FIELD
 2. EMERGENCY - WITH 90 MINUTE BATTERY BACKUP
 3. CONTROL - WITH INTEGRAL PHOTO SENSOR
 4. CONTROL - WITH INTEGRAL MOTION SENSOR
 5. -
 6. QUANTITY

ISSUE LOG

REV. NO.	DATE	DESCRIPTION
4		
3		
2		
1	10/19/18	REVISED PER JL

UNITED
 CONCRETE PRODUCTS
UNITED CONCRETE PRODUCTS INC.
 173 Church Street Yalesville, CT 06492
 (800) 234-3119 Fax: (203) 265-4941

CUSTOMER: SERTEX, LLC.
 JOB NAME: SAMPLE
 JOB LOCATION:
 DWG TITLE: ELECTRICAL POWER DISTRIBUTION
 DRAFTER: JPR DATE: 09/14/18 CK BY: DATE:
 JOB NO: 9531 SCALE: NONE DRAWING NO: EL-1